

**web:** <https://covidcirrhosis.web.unc.edu/>  
**email:** [covid.cirrhosis@unc.edu](mailto:covid.cirrhosis@unc.edu)  
**twitter:** @SecureCirrhosis

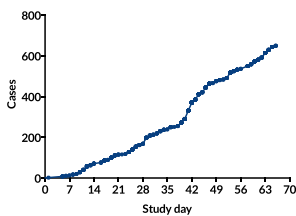
**web:** <https://covid-hep.net>  
**email:** [info@covid-hep.net](mailto:info@covid-hep.net)  
**twitter:** @COVIDHep

## Combined weekly update – 26 May 2020

We welcome you to this combined update from our two collaborating international registries: **SECURE-Cirrhosis** and **EASL supported COVID-Hep** collating clinical details of patients with chronic liver disease who develop COVID-19. *Please note that our registries contain predominantly hospitalised patients and are subject to reporting biases.*

### Total cohort (n = 649)

#### Submissions from 30 countries over 9 weeks



#### Characteristics

579 (89%) hospitalised  
425 (65%) men  
Median age 58 years (IQR 47-67)  
165 obese (25%)

#### Interim publications

Chronic liver disease, *Journal of Hepatology*:  
<http://doi.org/10.1016/j.jhep.2020.05.013>

Liver transplant, *Lancet Gastroenterology & Hepatology*:  
[http://doi.org/10.1016/S2468-1253\(20\)30125-4](http://doi.org/10.1016/S2468-1253(20)30125-4)

### Chronic liver disease, non-cirrhotic (n = 239)

#### Major outcomes

Hospitalised	209	89%
Intensive care admission	47	20%
Invasive ventilation	43	18%
Death	17	7%

### Cirrhosis (n = 288)

#### Major aetiologies

Alcohol	89	31%
Non-alcoholic steatohepatitis	50	17%
Hepatitis C	32	11%
Hepatitis B	20	7%
Haemochromatosis	20	7%
Autoimmune hepatitis	18	6%
Alcohol & HCV	17	6%

#### Decompensation

Any	124	43%
New or worse ascites	76	26%
New or worse encephalopathy	73	25%
Variceal haemorrhage	10	3%

#### Major outcomes

Hospitalised	265	92%
Intensive care admission	85	30%
Invasive ventilation	58	20%
Death	104	36%

### Liver transplant (n = 122)

#### Major outcomes

Hospitalised	101	83%
Intensive care admission	35	29%
Invasive ventilation	22	18%
Death	23	19%

We look forward to providing more updates in future and soon hope to publish more definitive analyses of both our transplant and chronic liver disease cohorts. We would like to thank all contributors to both registries.