

web: <https://covidcirrhosis.web.unc.edu/>
email: covid.cirrhosis@unc.edu
twitter: @SecureCirrhosis

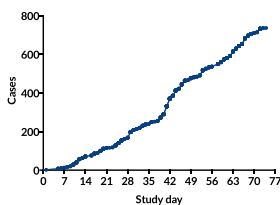
web: <https://covid-hep.net>
email: info@covid-hep.net
twitter: @COVIDHep

Combined weekly update – 02 June 2020

We welcome you to this combined update from our two collaborating international registries: **SECURE-Cirrhosis** and **EASL supported COVID-Hep** collating clinical details of patients with chronic liver disease who develop COVID-19. *Please note that our registries contain predominantly hospitalised patients and are subject to reporting biases.*

Total cohort (n = 736)

Submissions from 30 countries over 10 weeks



Characteristics

659 (90%) hospitalised
468 (64%) men
Median age 59 years (IQR 48-68)
162 (22 %) taking immunosuppressant drugs

Output

Chronic liver disease, JHep: bit.ly/3bYxUy6

Liver transplant, Lancet G&H: bit.ly/2Xmng01

Upcoming webinar, 17:00 CET 4th June: bit.ly/2ZXhnlj

Chronic liver disease, non-cirrhotic (n = 276)

Major outcomes

Hospitalised	248	90%
Intensive care admission	59	21%
Invasive ventilation	54	20%
Death	25	9%

Cirrhosis (n = 334)

Major aetiologies

Alcohol	102	31%
Non-alcoholic steatohepatitis	63	19%
Hepatitis C	36	11%
Hepatitis B	23	7%
Haemochromatosis	21	6%
Autoimmune hepatitis	21	6%
Alcohol & HCV	20	6%

Decompensation

Any	144	43%
New or worse ascites	88	26%
New or worse encephalopathy	86	26%
Variceal haemorrhage	11	3%

Major outcomes

Hospitalised	306	92%
Intensive care admission	94	28%
Invasive ventilation	65	19%
Death	121	36%

Liver transplant (n = 126)

Major outcomes

Hospitalised	105	83%
Intensive care admission	37	29%
Invasive ventilation	24	19%
Death	25	20%

We look forward to providing more updates in future and soon hope to publish more definitive analyses of both our transplant and chronic liver disease cohorts. We would like to thank all contributors to both registries.